

SPLIT IRIS METHOD BULKHEAD FEED-THRUS

PART NUMBER DEVELOPMENT

CTGS08EJG

KERN SERIES

CTGS = ALUMINIUM
CTGS1 = ST STEEL

FITTING SIZE

SEE TABLE 3

BULKHEAD OPTION

E = ENVIRONMENTAL SEAL
G = GROUNDING SPRING

FINISH CODE

SEE TABLE 10 ON PAGE 6
OMIT FOR CTGS1 SERIES

FUNCTION CODE

SEE TABLE 4



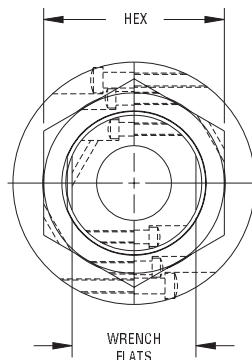
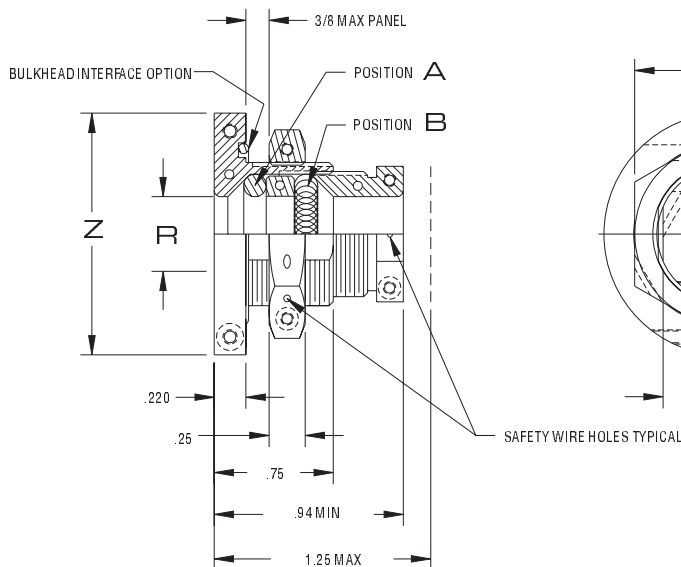
TABLE 3

FITTING SIZE	ZØ MAX	RØ CABLE RANGE		PANEL CUTOUT		HEX	WRENCH FLATS
		MIN	MAX	XØ	Y		
02	1.43	.125	.250	.75	.343	1.00	5/8
03	1.56	.157	.375	.88	.406	1-1/8	3/4
04	1.68	.282	.500	1.00	.465	1-1/4	7/8
05	1.81	.407	.625	1.13	.530	1-3/8	1.00
06	1.93	.532	.750	1.25	.595	1-1/2	1-1/8
07	2.06	.657	.875	1.38	.657	1-5/8	1-1/4
08	2.18	.782	1.000	1.50	.720	1-3/4	1-3/8
09	2.31	.907	1.125	1.63	.780	1-7/8	1-1/2
10	2.44	1.032	1.250	1.75	.840	2.00	1-5/8
11	2.56	1.157	1.375	1.88	.902	2-1/8	1-3/4
12	2.68	1.282	1.500	2.00	.965	2-1/4	1-7/8
13	2.81	1.407	1.625	2.13	1.030	2-3/8	2.00
14	2.93	1.532	1.750	2.25	1.090	2-1/2	2-1/8
15	3.06	1.657	1.875	2.38	1.157	2-5/8	2-1/4
16	3.18	1.782	2.000	2.50	1.215	2-3/4	2-3/8
17	3.31	1.907	2.125	2.63	1.280	2-7/8	2-1/2
18	3.43	2.032	2.250	2.75	1.340	3-00	2-5/8
19	3.56	2.157	2.375	2.88	1.402	3-1/8	2-3/4
20	3.68	2.282	2.500	3.00	1.468	3-1/4	2-7/8

TABLE 4

FUNCTION	APPLICATION	A	B
A	EMI / RFI	N / A	IRIS
B	ENV	N / A	SEAL
C	STRAIN RELIEF	N / A	*
D	EMI / RFI / ENV	IRIS	SEAL
E	ENV / EMI / RFI	SEAL	IRIS
F	EMP	IRIS	IRIS
G	HIGH PRESSURE	SEAL	SEAL
H	EMI / STR RELIEF	IRIS	*
J	ENV / STR RELIEF	*	SEAL

* HEAVY DUTY IRIS (ADDED STRAIN RELIEF)



PANEL CUTOUT

