

REVERSIBLE MOUNTING, IRIS METHOD BULKHEAD FEED-THRUS WITH STRAIN RELIEF

PART NUMBER DEVELOPMENT CTO1243-08AW

KERN SERIES

FITTING SIZE
SEE TABLE 7

FINISH CODE

SEE TABLE 10 ON PAGE 6
OMIT FOR MATERIAL CODES B OR C

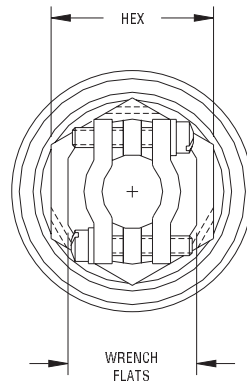
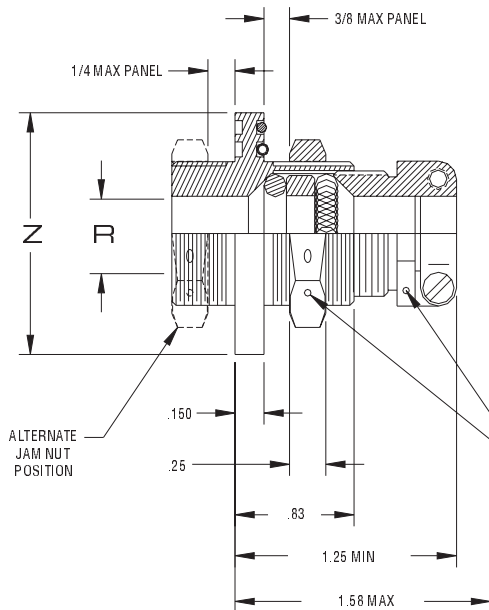
MATERIAL OPTION CODE

A = ALUMINUM ALLOY
B = STAINLESS STEEL
C = BRASS ALLOY 360
CONSULT FACTORY FOR OTHER
MATERIALS

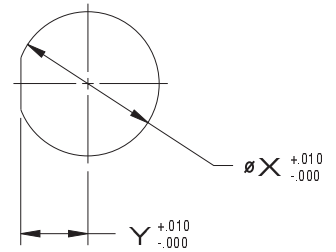


TABLE 7

FITTING SIZE	Z Ø MAX	R Ø CABLE RANGE		PANEL CUTOUT		HEX	WRENCH FLATS
		MIN	MAX	X Ø	Y FLAT		
02	1.43	.125	.250	.75	.343	7/8	5/8
03	1.56	.157	.375	.88	.406	1.00	3/4
04	1.68	.282	.500	1.00	.465	1-1/8	7/8
05	1.81	.407	.625	1.13	.530	1-1/4	1.00
06	1.93	.532	.750	1.25	.595	1-3/8	1-1/8
07	2.06	.657	.875	1.38	.657	1-1/2	1-1/4
08	2.18	.782	1.000	1.50	.720	1-5/8	1-3/8
09	2.31	.907	1.125	1.63	.780	1-3/4	1-1/2
10	2.43	1.032	1.375	1.75	.840	1-7/8	1-5/8
11	2.56	1.157	1.250	1.88	.902	2.00	1-3/4
12	2.68	1.282	1.500	2.00	.965	2-1/8	1-7/8
13	2.81	1.407	1.625	2.13	1.030	2-1/4	2.00
14	2.93	1.532	1.750	2.25	1.090	2-3/8	2-1/8
15	3.06	1.657	1.875	2.38	1.157	2-1/2	2-1/4
16	3.18	1.782	2.00	2.50	1.215	2-5/8	2-3/8
17	3.31	1.907	2.125	2.63	1.280	2-3/4	2-1/2
18	3.43	2.032	2.250	2.75	1.340	2-7/8	2-5/8
19	3.56	2.157	2.375	2.88	1.402	3.00	2-3/4
20	3.68	2.282	2.500	3.00	1.468	3-1/8	2-7/8



PANEL CUTOUT



SAFETY WIRE HOLES TYPICAL