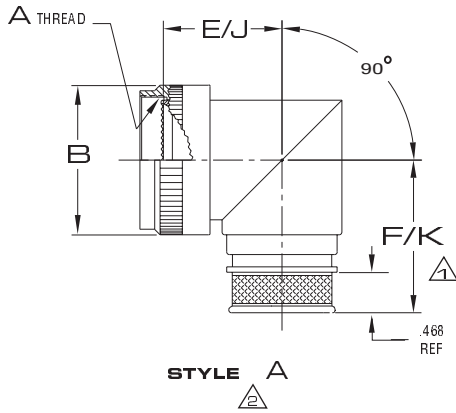
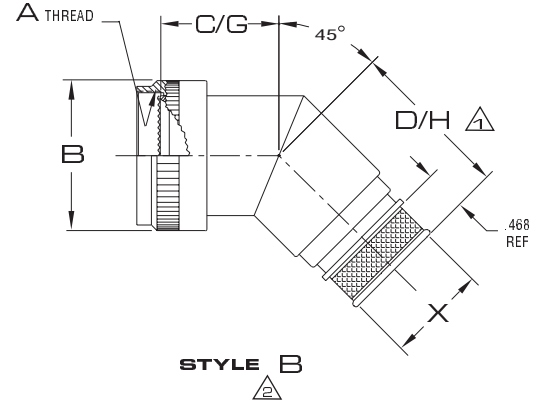
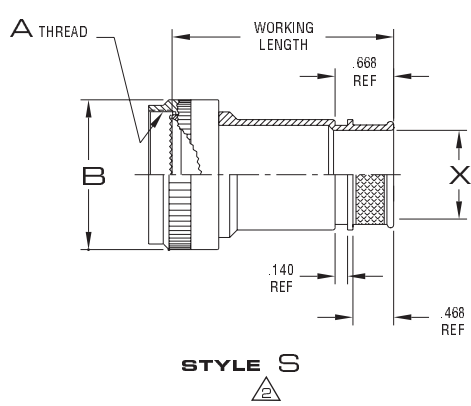


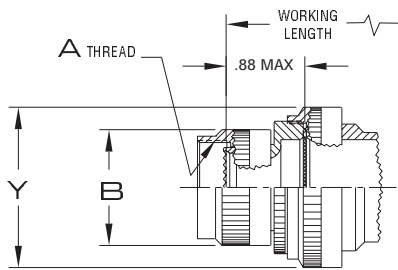
FIGURE 1



- ① DIMENSIONS INDICATED WILL BE .200 INCH LESS WHEN FUNCTION CODE "A" IS ORDERED.
- ② DRAWINGS DEPICT UNITS WITH "D" FUNCTION IN STANDARD CONFIGURATION (TYPE I). WHEN CABLE ENTRY DIAMETER EXCEEDS MAX ENTRY PER TABLE 2, STEP DOWN CONFIGURATION WILL BE SUPPLIED. SEE FIGURE 2 BELOW.

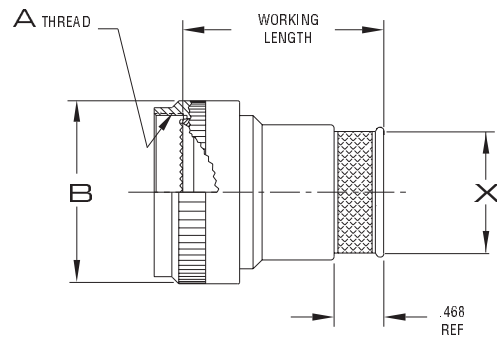
FIGURE 2

WHEN CABLE ENTRY DIAMETER EXCEEDS MAX ENTRY PER TABLE 2, STEP DOWN CONFIGURATION AS SHOWN WILL BE SUPPLIED.



TYPE 2 (STEP-DOWN CONFIGURATION)

FIGURE 3



STYLE S FUNCTION CODE "A"