

MARINE ENVIRONMENT BACKSHELLS

CABLE / CONDUIT BULKHEAD FEED-THRU

PART NUMBER DEVELOPMENT

C2392 K / 13

KERN SERIES

ENTRY SIZE CODE

SEE TABLE 8

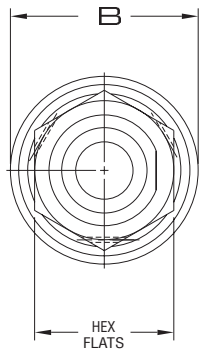
MATERIAL AND FINISH CODE

OMIT FOR ALUMINUM ALLOY / CAD O.D.

13 = Stainless Steel / Passivated

64 = Aluminum Bronze

61 = Brass



PANEL CUTOUT

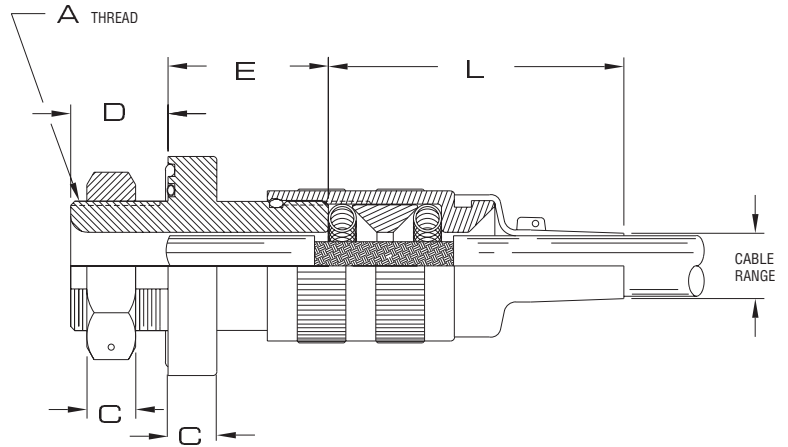
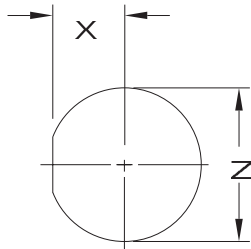


TABLE 8

ENTRY SIZE CODE	CABLE RANGE Ø		A THREAD CLASS 2A	B DIA	C +/- .03	D +/- .03	E +/- .03	L REF	PANEL CUTOUT		HEX FLAT
	MAX. O.D. CABLE	MIN. O.D. SHIELD							X	Z Ø	
A	.406	.200	.750 - 20 UNEF	1.43	.375	.750	1.253	3.25	.75	.343	1/8
B	.515	.260	.875 - 20 UNEF	1.56	.375	.750	1.253	3.25	.88	.406	1.0
C	.640	.400	1.000 - 20 UNEF	1.68	.375	.750	1.253	3.91	1.00	.465	1 1/8
D	.750	.400	1.125 - 18 UNEF	1.81	.375	.750	1.175	4.93	1.13	.530	1 1/4
E	.812	.430	1.250 - 18 UNEF	1.93	.375	.750	1.175	5.20	1.25	.595	1 3/8
F	.843	.470	1.375 - 18 UNEF	2.06	.375	.750	1.175	5.20	1.38	.657	1 1/2
G	.953	.580	1.500 - 18 UNEF	2.18	.375	.750	1.175	6.20	1.50	.720	1 5/8
J	1.062	.690	1.625 - 18 UNEF	2.31	.375	.750	1.175	6.20	1.63	.780	1 3/4
K	1.172	.800	1.750 - 18 UNS	2.43	.375	.750	1.175	7.43	1.75	.846	1 7/8
L	1.265	.890	1.875 - 18 UNS	2.56	.375	.750	1.175	7.43	1.88	.906	2.0
M	1.406	1.010	2.000 - 18 UNS	2.68	.375	.750	1.175	7.43	2.00	.965	2 1/8
N	1.515	1.130	2.125 - 18 UNS	2.81	.375	.750	1.175	7.43	2.13	1.030	2 1/4
P	1.625	1.130	2.250 - 18 UNS	2.93	.500	1.000	1.550	9.15	2.25	1.095	2 3/8
R	1.750	1.250	2.375 - 18 UNS	3.06	.500	1.000	1.550	9.15	2.38	1.157	2 1/2
S	1.875	1.380	2.625 - 18 UNS	3.18	.500	1.000	1.550	9.15	2.50	1.220	2 5/8
T	2.062	1.560	2.750 - 18 UNS	3.31	.500	1.000	1.550	9.15	2.63	1.280	2 3/4
V	2.187	1.690	2.875 - 18 UNS	3.43	.500	1.000	1.550	11.17	2.75	1.343	2 7/8
W	2.312	1.810	3.125 - 18 UNS	3.56	.500	1.000	1.550	11.17	2.88	1.406	3.0
X	2.500	2.000	3.250 - 18 UNS	3.68	.500	1.000	1.550	11.17	3.00	1.465	3 1/8
Y	2.609	2.109	3.375 - 18 UNS	3.81	.500	1.000	1.550	11.17	3.13	1.530	3 1/4
Z	2.781	2.281	4.000 - 18 UNS	3.93	.500	1.000	1.550	11.17	3.25	1.595	3 3/8